



Wilkes Close, Mill Hill, NW7 1FP
£850,000 Freehold Council Tax Band F

REAL ESTATES
Est.1981

Estate Agents · Residential Sales · Investments · Lettings

Real Estates are delighted to offer for sale this 3 bedroom, 2 bathroom family home situated in the highly sought after Millbrook Park Development, within easy reach of Mill Hill East Northern Line tube station, local green spaces, park and play areas within the development.

The property comprises modern fitted kitchen, guest cloakroom and reception with doors leading onto patio with steps up to Astroturf. The first floor provides 2 bedrooms and a bathroom, whilst the top floor comprises master bedroom with en suite shower room and walk-in wardrobe. Off street parking.

Viewing is highly recommended via the vendors' Sole Agent REAL ESTATES.







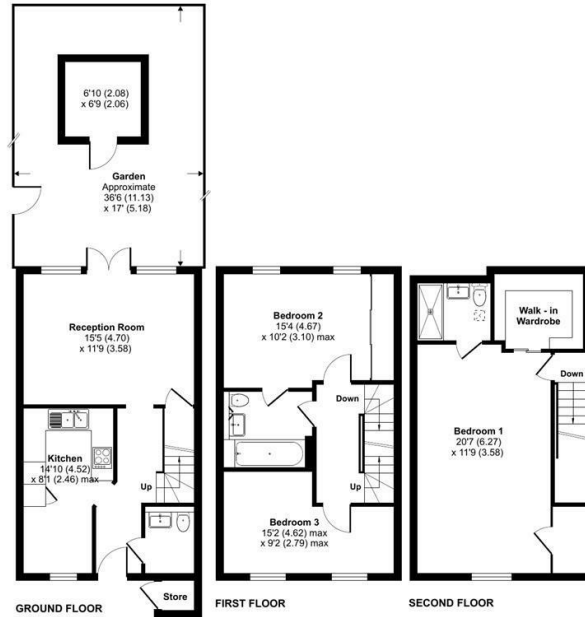
Wilkes Close, Mill Hill, NW7

Approximate Area = 1230 sq ft / 114.2 sq m

Outbuilding / Store = 54 sq ft / 5 sq m

Total = 1284 sq ft / 119.3 sq m

For identification only - Not to scale



Floor plan produced in accordance with RICS Property Measurement Standards incorporating International Property Measurement Standards (IPMS Residential). © richcom 2022. Produced for Real Estates - REF: 600075

| Energy Efficiency Rating | | |
|---|---------|-----------|
| | Current | Potential |
| Very energy efficient - lower running costs | | |
| A | | 95 |
| B | 85 | |
| C | | |
| D | | |
| E | | |
| F | | |
| G | | |
| Not energy efficient - higher running costs | | |
| EU Directive | | |



Real EstatesTottenham Office:
32 Tottenham Lane
Tottenham N20 9QJ

II : 0208 445 3132
e : info@realestates-wsp.co.uk
w : www.realestates-wsp.co.uk